



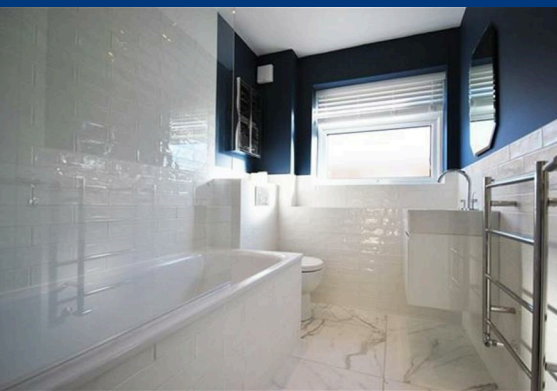
Woodedge Close, North Chingford, E4





£1,600 Per Month

- 2 BEDROOM SECOND FLOOR FLAT
- MODERN FITTED KITCHEN
- MODERN FITTED BATHROOM
- WALKING DISTANCE TO CHINGORD STATION AND SHOPS
- DOUBLE GLAZED
- Gas Central Heating
- VIEWING RECOMMENDED
- PART FURNISHED



Offering this stylish top floor flat located in the Heart of North Chingford with beautiful far reaching views and natural light flooding through the windows giving it a bright and homely feeling. The property consists of two double bedrooms, lounge, dining area, stunning fully fitted kitchen and bathroom. Walking distance to North Chingford station and trendy high street.



 2  1  1  D

[Kitchen](#)

[Kitchen.](#)

[Bathroom](#)

[Bedroom One](#)

[Bedroom Two](#)

[Lounge](#)

[View](#)

[Front](#)

[Full Description](#)

[Full Description.](#)

Floor Plan



Viewing

Please contact our Buckhurst Hill Office on +4420 8559 2211 if you wish to arrange a viewing appointment for this property or require further information.

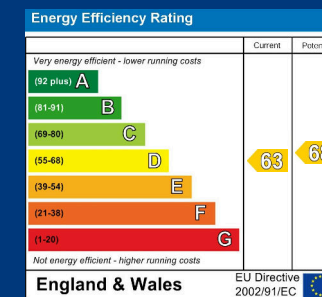
IMPORTANT NOTICE: These particulars, whilst believed to be accurate are set out as a general outline only for guidance and do not constitute any part of an offer or contract. Intending purchasers should not rely on them as statements of representation of fact, but must satisfy themselves by inspection or otherwise as to their accuracy. No person in this firm's employment has the authority to make or give any representation or warranty in respect of the property.

155 Queens Road, Buckhurst Hill, Essex, IG9 5AZ
 Tel: +4420 8559 2211 Email: buckhursthill@knightons.co.uk knightons.co.uk

Area Map



Energy Efficiency Graph



Local Authority:
 Council Tax Band:
 Service Charge:
 Ground Rent: