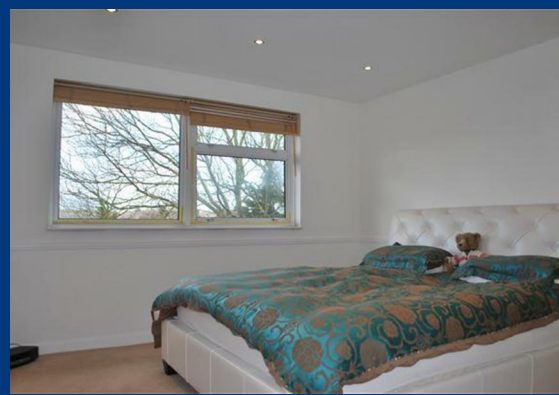




Woodedge Close, North Chingford, E4





£1,700 Per Month

- OWN GARDEN
- MODERN FITTED BATHROOM
- TWO DOUBLE BEDROOMS
- WALKING DISTANCE TO TRAIN STATION



Situated in a quiet cul de sac is this well presented two bedroom top floor apartment. The property benefits from modern fitted bathroom, two double bedrooms, own garden and is within a short walk to North Chingford's shops & train station.





 2  1  1  D

[Kitchen](#)

[Bedroom Two](#)

[Garden](#)

[Hallway](#)

[Bedroom One](#)

[Lounge](#)

[View from flat](#)

[Bathroom](#)

[Exterior](#)

[Full Description](#)

[Full Description.](#)

Floor Plan



Viewing

Please contact our Buckhurst Hill Office on +4420 8559 2211 if you wish to arrange a viewing appointment for this property or require further information.

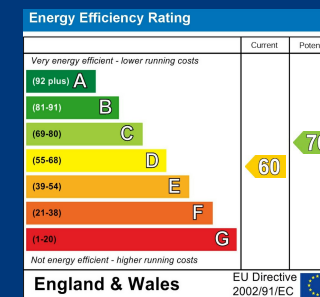
IMPORTANT NOTICE: These particulars, whilst believed to be accurate are set out as a general outline only for guidance and do not constitute any part of an offer or contract. Intending purchasers should not rely on them as statements of representation of fact, but must satisfy themselves by inspection or otherwise as to their accuracy. No person in this firm's employment has the authority to make or give any representation or warranty in respect of the property.

155 Queens Road, Buckhurst Hill, Essex, IG9 5AZ
 Tel: +4420 8559 2211 Email: buckhursthill@knightons.co.uk knightons.co.uk

Area Map



Energy Efficiency Graph



Local Authority: London Borough of Waltham Forest
 Council Tax Band: C
 Service Charge:
 Ground Rent: